

REPAIR GAS HEAT  
B6604

BARKSDALE AIR FORCE BASE, LA.


PROJECT NO. AWUB 10-0192

18 APRIL 2017

S. E. Huey Co.

CONSULTING ENGINEERS  
MONROE, LOUISIANA

INDEX OF DRAWINGS	
SHT. NO.	TITLE
CS1	TITLE SHEET
M1	MECHANICAL SCHEDULES & DETAILS
M2	MECHANICAL FLOOR PLAN
E1	ELECTRICAL SCHEDULES & DETAILS
E2	ELECTRICAL FLOOR PLAN
E3	ELECTRICAL PANELBOARD SCHEDULES
S1	EXISTING ROOF FRAMING PLAN
S2	STRUCTURAL SECTIONS & ARCHITECTURAL PENETRATION DETAILS

	
BARKSDALE AIR FORCE BASE LOUISIANA	
APPROVED	
SIGNATURE	OFFICE
	Civil Engineer
	Chief of Engineering
	Chief of Design
	Contracting
	User
COORDINATION	
	Airfield Manager
	Ground Safety
	Communication Computers
	Biomedical Engineer
	Security Police
	Security Systems
	Fire Chief
	Chief of Operations
	Environmental Management
	Construction Management
	Roofing Engineer
	Pavements Engineer
	Corrosion Engineer
	Protective Coating Engr.

CONTRACTING ORGANIZATION

S. E. Huey Co.  
Engineering • Architecture • Surveying  
1111 N. 19th ST. MONROE, LA. 71201 PH. 318-325-1791

DESIGN FIRM

  
S. E. Huey Co.  
Engineering • Architecture • Surveying  
1111 N. 19th ST. MONROE, LA. 71201 PH. 318-325-1791

DESIGNER D.R.A.	PROJECT MANAGER D.R.A.
DRAWER D.C.J.	DATE 18 APR 17

REVISION	BY/DATE

SHEET TITLE  
Title Sheet

SHEET CS1	OF 1CS
--------------	-----------

PROJECT TITLE  
REPAIR GAS HEAT  
B6604 (307th BW)

BARKSDALE AIR FORCE BASE, LA.	
PROJECT NO. BAFB-AWUB 10-0192	FACILITY NO.
DRAWING NO.	

TO BAFB EAST GATE –  
I-20 INDUSTRIAL DRIVE EXIT

CONTRACTORS ROUTE – OUT

PROJECT SITE

FLIGHTLINE ACCESS GATE

CONTRACTORS ROUTE  
TO JOB SITE

CONTRACTORS ROUTE – IN

2d CONTRACTING

VICINITY MAP







**BARKSDALE  
AIR FORCE BASE  
LOUISIANA**

**APPROVED**

SIGNATURE	OFFICE
	Civil Engineer
	Chief of Engineering
	Chief of Design
	Contracting
	User

**COORDINATION**

	Airfield Manager
	Ground Safety
	Communication Computers
	Biomedical Engineer
	Security Police
	Security Systems
	Fire Chief
	Chief of Operations
	Environmental Management
	Construction Management
	Roofing Engineer
	Pavements Engineer
	Corrosion Engineer
	Protective Coating Engr.

**CONTRACTING ORGANIZATION**



**DESIGN FIRM**

**JOHN J. GUTH  
ASSOCIATES,  
INC.  
MECHANICAL AND  
ELECTRICAL  
ENGINEERS**

208 MILAM STREET  
SHREVEPORT, LA  
71101

GUTH PROJECT NO. 6637

DESIGNER	PROJECT MANAGER
MSH	MSH
DATE	DATE
SGI	18 APR 17

REVISION	BY/DATE

**SHEET TITLE**

**MECHANICAL  
SCHEDULES & DETAILS**

SHEET **M1** OF **2M**

**PROJECT TITLE**  
**Repair Gas Heat  
B6604 (307th BW)**

BARKSDALE AIR FORCE BASE, LA.

PROJECT NO.  
BAFB-AWUB 10-0192

DRAWING NO. FACILITY NO.

**GAS FIRED RADIANT HEATER SCHEDULE**

NO.	SERVICE	INPUT BTU/HR	GAS LINE PRESSURE	MOUNTING HT (AFF)	MOUNTING POSITION	REMARKS
RHA	HANGAR	200,000	5 PSI	FIELD VERIFY	VARIES	1,2

**REMARKS:**

1. LOW INTENSITY TYPE - 25' LONG U-TUBE.
2. PROVIDE SHEET METAL BLOWER ENCLOSURE.

**PIPE AND FITTING MATERIAL SCHEDULE**

SERVICE	PIPE MATERIAL	JOINT TYPE	FITTING MATERIAL	REMARKS
GAS PIPING	SCHEDULE 40 BLACK STEEL, ASTM A-53	SCREWED THRU 3/4" SIZE, WELDED FOR 1" AND LARGER AND ALL PIPING 1 PSI AND HIGHER.	MALLEABLE SCREWED TYPE, BUTT WELDED STEEL WHERE REQUIRED	SEE SPECIFICATIONS FOR PAINTING. FOR EXTERIOR MATCH COLOR OF ADJACENT PIPE. INTERIOR PIPING SHALL BE SAFETY YELLOW.

**AIR CONDITIONING SYMBOLS**

SYMBOL	DESCRIPTION
ⓘ A1	ROOM THERMOSTAT WITH ZONE DESIGNATION
—CW—	CONTROL WIRING INSIDE CONDUIT
—V—	NEW FLUE GAS VENT
	RADIANT HEATER
—G—	EXISTING GAS PIPING
—G—	NEW GAS PIPING
—5PSI—G—	5 PSI GAS PIPING
	PUSH BUTTON - EMERGENCY HVAC STOP
	GATE VALVE
	ELBOW DOWN, ELBOW UP
	TEE DOWN, TEE UP
	CONCENTRIC REDUCER, ECCENTRIC REDUCER
	UNION
	TERMINATION OF DEMOLITION
	POINT OF CONNECTION
(M1)	MECHANICAL NOTE REFERENCE
(A M1)	DETAIL DESIGNATION SHEET WHERE DETAIL IS LOCATED

**SEQUENCE OF OPERATION:**

RADIANT HEATER:  
INTERLOCK MULTIPLE HEATERS AS INDICATED ON DRAWING SO THAT ALL HEATERS IN A ZONE ENERGIZE AND DE-ENERGIZE TOGETHER TO MAINTAIN SPACE HEATING SET POINT IN THAT ZONE.

HVAC EMERGENCY STOP:  
PROVIDE MANUALLY OPERATED SHUTOFF SWITCH TO DE-ENERGIZE ALL RADIANT HEATERS. SWITCH SHALL BE CLEARLY LABELED AND SHALL NOT BE THE SAME COLOR AS FIRE ALARM PULL STATIONS.

5 PSI GAS PIPE SIZED ON 2012 INTERNATIONAL FUEL GAS CODE (IFGC) TABLE 402.4(7) FOR SCH 40 METALLIC PIPE. INLET PRESSURE 5.0 PSI, 3.5 PSI PRESSURE DROP AND 850' PIPE LENGTH.

LOW PRESSURE GAS PIPE SIZED ON 2012 INTERNATIONAL FUEL GAS CODE (IFGC) TABLE 402.4(1) FOR SCH 40 METALLIC PIPE. INLET PRESSURE < 2.0 PSI, 0.3" W.C. PRESSURE DROP AND 300' PIPE LENGTH.

**CONNECTED GAS LOAD:**

ZONE A1	5x200 CFH	1000 CFH
ZONE A2	5x200 CFH	1000 CFH
ZONE A3	4x200 CFH	800 CFH
ZONE B1	5x200 CFH	1000 CFH
ZONE B2	6x200 CFH	1200 CFH
ZONE C1	5x200 CFH	1000 CFH
ZONE C2	6x200 CFH	1200 CFH
ZONE C3	6x200 CFH	1200 CFH
ZONE D1	5x200 CFH	1000 CFH
ZONE D2	6x200 CFH	1200 CFH

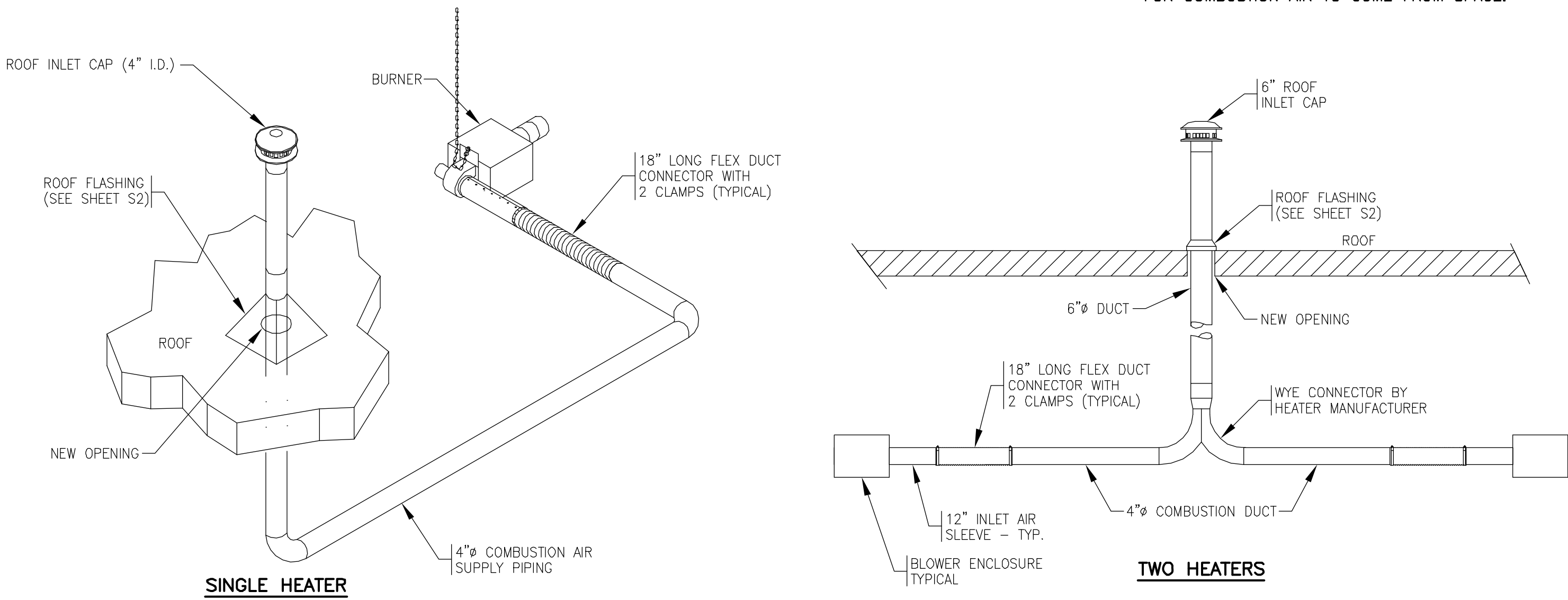
**TOTAL NEW CONNECTED LOAD** 10,600 CFH

**BUILDING VOLUME CALCULATION**

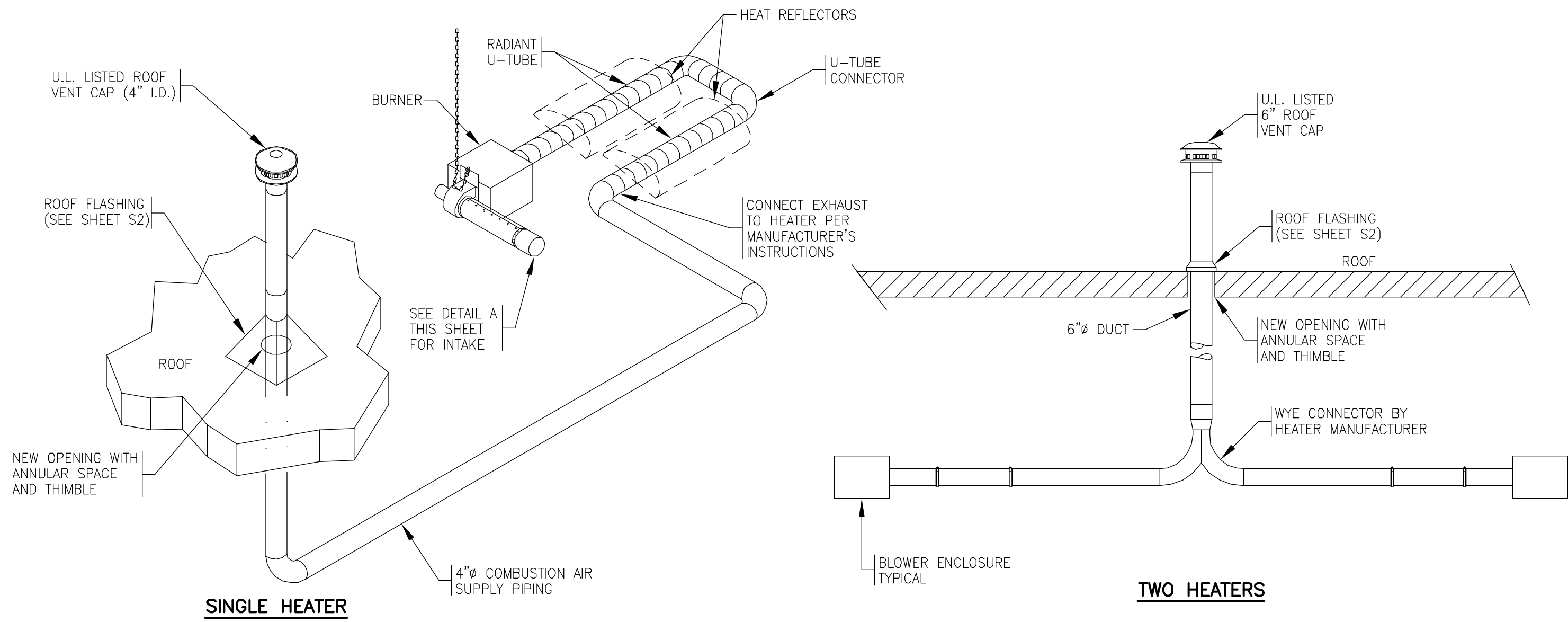
LENGTH x WIDTH x HEIGHT  
370' x 248' x 65.75' = 6,033,220.0 FT3

MINIMUM SPACE VOLUME PER 2012 IFGC  $\frac{50 \text{ FT}}{1000 \text{ BTU/HR}} \times 8,000,000 \text{ BTU/HR} = 400,000$

NOTE:  
BUILDING VOLUME EXCEEDS MINIMUM VOLUME REQUIRED FOR COMBUSTION AIR TO COME FROM SPACE.



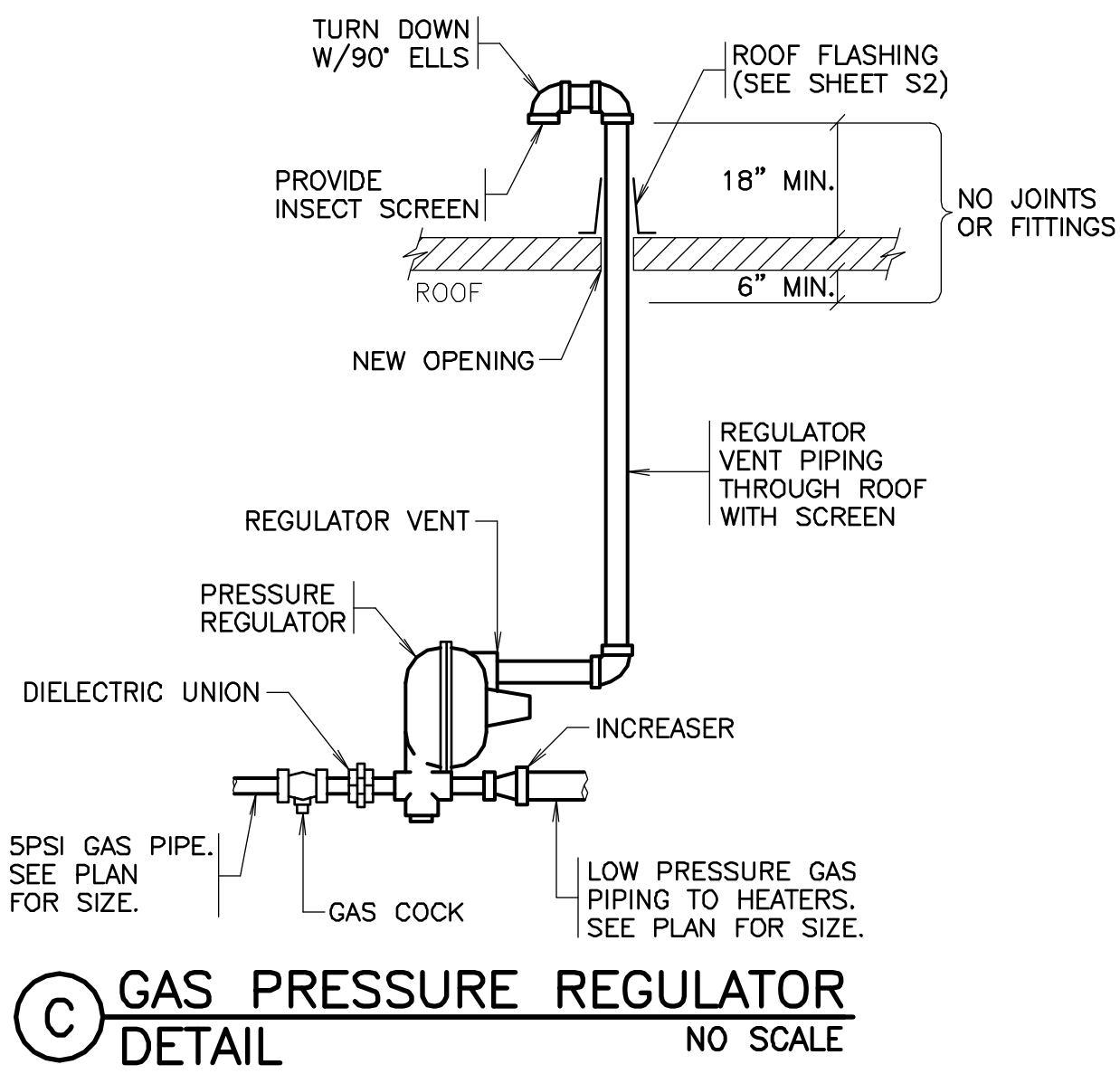
**A TYPICAL COMBUSTION AIR INTAKE** NO SCALE



**B TYPICAL RADIANT HEATER EXHAUST** NO SCALE

**NOTES:**

1. BOTH HEATERS CONNECTED TO A COMMON VENT SHALL OPERATE ON THE SAME THERMOSTAT.
2. CONSTRUCT DUCTWORK AND SEAL ALL JOINTS AND SEAMS ON EXHAUST VENT DUCT PER RADIANT HEATER MANUFACTURER'S INSTALLATION INSTRUCTIONS.



**C GAS PRESSURE REGULATOR DETAIL** NO SCALE





**APPROVED**

## COORDINATION

CONTRACTING ORGANIZATION

DESIGN FIRM

**JOHN J. GUTH  
ASSOCIATES,  
INC.**

**MECHANICAL AND  
ELECTRICAL  
ENGINEERS**

208 MILAM STREET  
SHREVEPORT, LA  
71101

GUTH PROJECT NO. 6637

REVISION	BY/DATE
----------	---------

SHEET TITLE

SHEET M2	OF 2M
-------------	----------

BARKSDALE AIR FORCE BASE, LA.

BAFR-AWUB 10-019

DRAWING NO.	FACILITY NO.
-------------	--------------



- M5 PROVIDE 5 PSI TO 12" W.C. GAS REGULATOR. PROVIDE FULL SIZE VENT PIPING TO BUILDING EXTERIOR.
- M6 COMBINE COMBUSTION AIR DUCTS FOR TWO HEATERS ON SAME ZONE. IN ADDITION COMBINE EXHAUST DUCTS.
- M7 SINGLE HEATER COMBUSTION AIR DUCT AND SINGLE EXHAUST VENT.

GENERAL NOTES:

1. THE CONTRACTOR, ALL SUBCONTRACTORS AND ALL PERSONNEL THAT WILL BE WORKING AT THE SITE SHALL ATTEND AN EXPLOSIVE SAFETY BRIEFING PRIOR TO ANY WORK BEING DONE. CONTACT WEAPONS SAFETY AT 456-5989 TO ARRANGE FOR THE BRIEFING.
2. THE CONTRACTOR SHALL LIMIT WORK TO ONE BAY AT A TIME. ALL WORK SHALL BE COMPLETED PRIOR TO WORKING IN SUBSEQUENT BAYS. CONTRACTOR SHALL WORK BAYS IN SEQUENCE TO MINIMIZE DISRUPTION OF THE BUILDING FUNCTION.
3. CONTRACTOR SHALL EXERCISE CARE IN WORK AROUND NEW WALL AND ROOF PENETRATIONS. NEW WORK SHALL MATCH AS CLOSE AS POSSIBLE THE ORIGINAL APPEARANCE OF THE BUILDING.
4. REFER TO STRUCTURAL DRAWINGS FOR SUPPORT INFO.

MECHANICAL FLOOR PLAN 1/16"=1'-0"



2' 0" 10' 20' 30' 40' 50'

SCALE: 1/16 INCH = 1 FOOT





**BARKSDALE  
AIR FORCE BASE  
LOUISIANA**

**APPROVED**

SIGNATURE	OFFICE
	Civil Engineer
	Chief of Engineering
	Chief of Design
	Contracting
	User

**COORDINATION**

	Airfield Manager
	Ground Safety
	Communication Computers
	Bioregional Engineer
	Security Police
	Security Systems
	Fire Chief
	Chief of Operations
	Environmental Management
	Construction Management
	Roofing Engineer
	Pavements Engineer
	Corrosion Engineer
	Protective Coating Engr.

**CONTRACTING ORGANIZATION**



**S. E. Huey Co.**  
Engineering • Architecture • Surveying  
1111 N. 19th St. Monroe, LA 71201 PH. 318-325-1791

**DESIGN FIRM**

**JOHN J. GUTH  
ASSOCIATES,  
INC.**

**MECHANICAL AND  
ELECTRICAL  
ENGINEERS**

208 MILAM STREET  
SHREVEPORT, LA  
71101

**GUTH PROJECT NO. 6637**

DESIGNER	PROJECT MANAGER
JPF	MSM
DATE	DATE
DES	18 APR 17

REVISION	BY/DATE

**SHEET TITLE**

**ELECTRICAL  
SCHEDULES &  
DETAILS**

SHEET	OF
E1	3E

**PROJECT TITLE**  
**Repair Gas Heat  
B6604 (307th BW)**

BARKSDALE AIR FORCE BASE, LA.

PROJECT NO.  
BAFB-AWUB 10-0192

DRAWING NO.

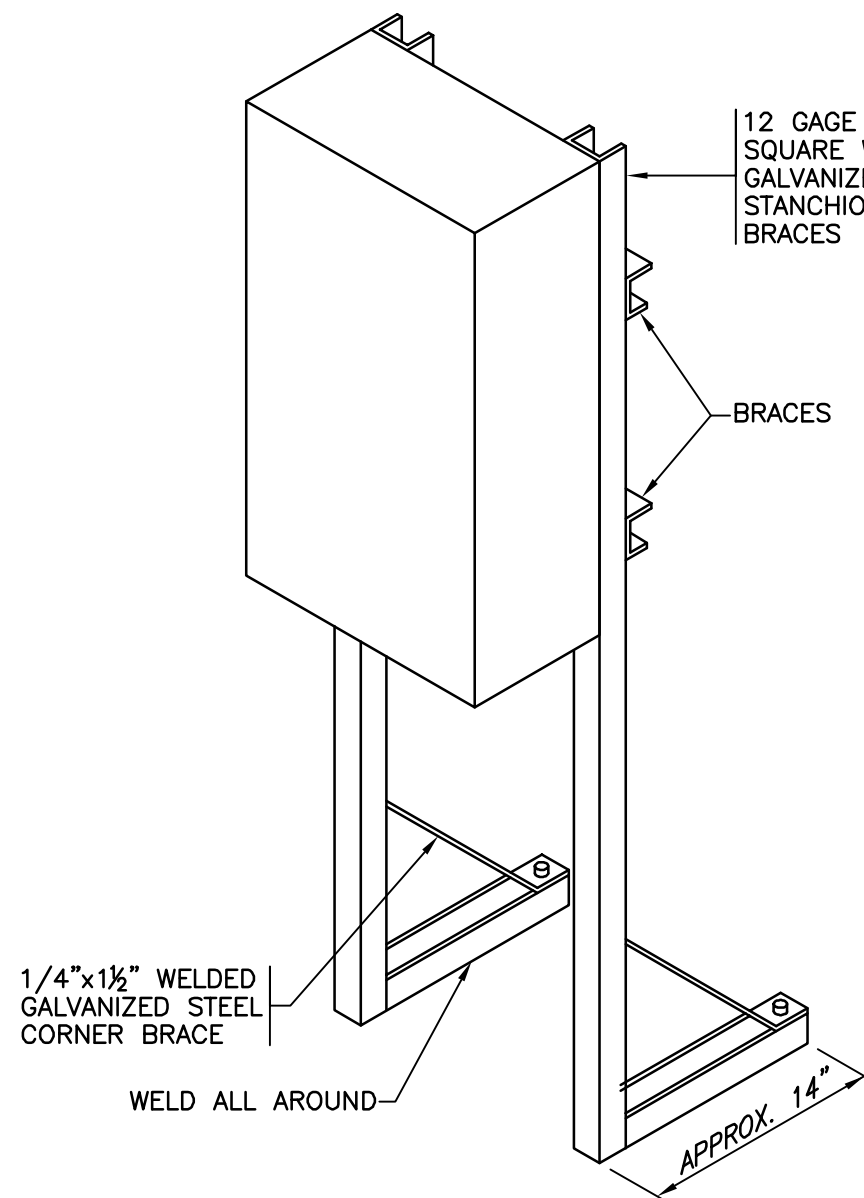
FACILITY NO.

**ELECTRICAL SYMBOLS**

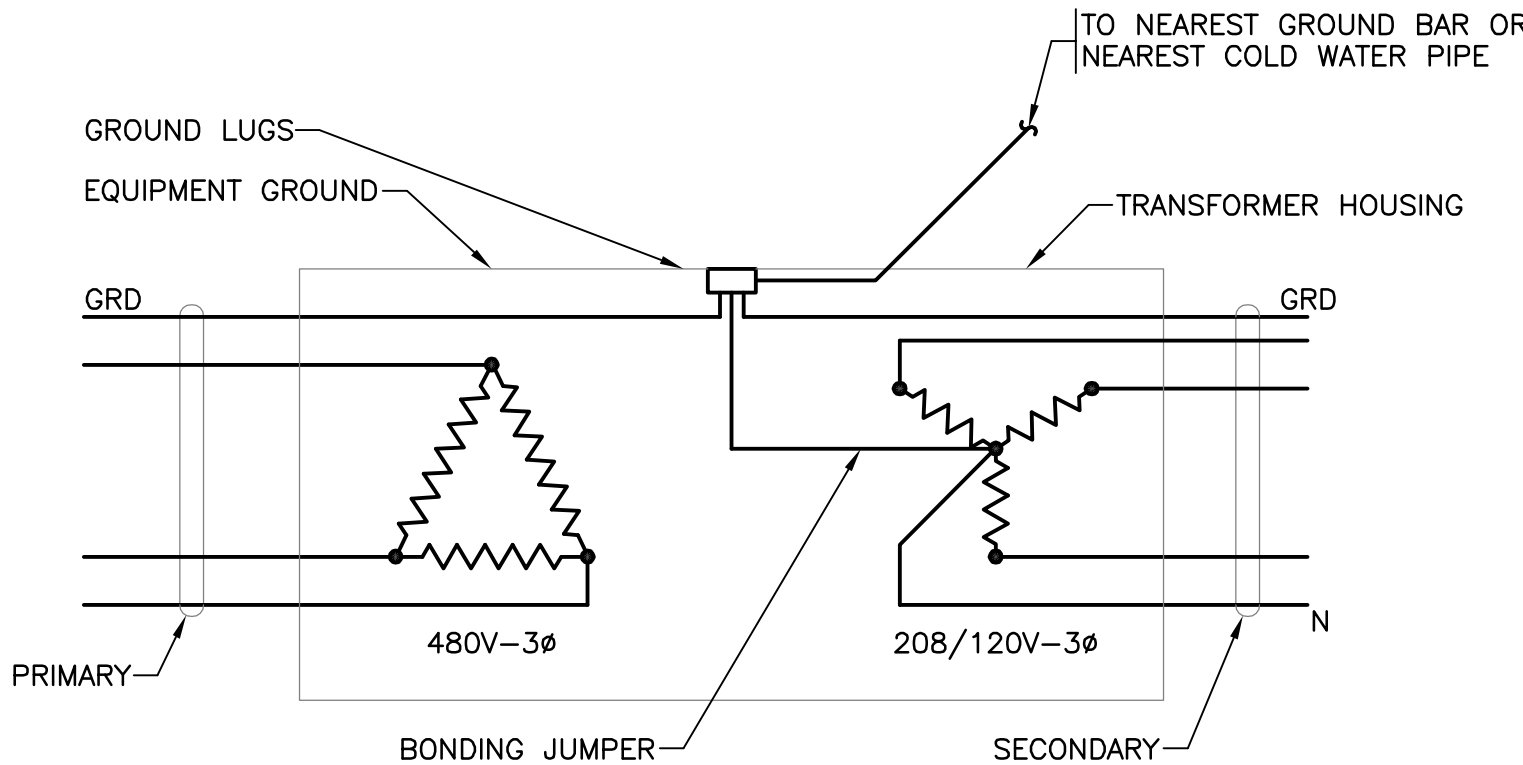
SYMBOL	DESCRIPTION	SYMBOL	DESCRIPTION
	MOTOR RATED TOGGLE SWITCH—MOUNT CENTERLINE 48" AFF		KILOWATT-HOUR DEMAND METER
	CONDUIT AND WIRING RUN CONCEALED IN WALLS OR ABOVE CEILING		SAFETY SWITCH, FUSED AND NON-FUSED RESPECTIVELY
	CONDUIT AND WIRING RUN IN OR BELOW FLOOR OR BELOW GRADE		ELECTRICAL MANHOLE
	NEUTRAL AND PHASE OR SWITCHED CONDUCTOR RESPECTIVELY		MOTOR STARTER, COMBINATION STARTER
	GROUND CONDUCTOR, GREEN INSULATED		LIGHTING CONTACTOR, TIMECLOCKS ENCLOSED CIRCUIT BREAKER
	HOMERUN TO PANEL (CIRCUIT NUMBERS INDICATED)		PANELBOARD, SURFACE MOUNTED AND FLUSH MOUNTED RESPECTIVELY
	CONDUIT TURNED UP; CONDUIT TURNED DOWN RESPECTIVELY		DISTRIBUTION PANELBOARD OR SWITCHBOARD
	WIRING IN FLEXIBLE METALLIC CONDUIT		TRANSFORMER
	CONDUIT OR DUCT STUB-OUT - PROVIDE CAP AND MARK FOR FUTURE LOCATION		MOTOR WITH DISCONNECT SWITCH - PROVIDE TOGGLE SWITCH, MANUAL STARTER OR SAFETY SWITCH AS REQUIRED BY CODE FOR MOTOR RATING
	DUPLEX RECEPTACLE, 125V-1P-20A - HUBBELL #5362-MOUNT CENTERLINE 18" AFF UNLESS NOTED		BARE COPPER GROUND
	DOUBLE DUPLEX RECEPTACLE, 125V-1P-15A - HUBBELL #5262-MOUNT CENTERLINE 18" AFF UNLESS NOTED		WEATHERPROOF
	GFCI RECEPTACLE (SEE RECEPTACLE SYMBOLS) SURFACE MOUNTED HORIZONTALLY-WITH TAYMAC #60310 WEATHERPROOF DEVICE PLATE		ABOVE FINISHED FLOOR
	JUNCTION BOX (JB)		MAIN CIRCUIT BREAKER
	DUPLEX RECEPTACLE, 125V-1P-20A, GROUND FAULT CURRENT INTERRUPTING TYPE - HUBBELL #GF5362-MOUNT CENTERLINE 18" AFF UNLESS NOTED		MAIN LUGS ONLY
	AIR HANDLING UNIT MOTOR		UNLESS OTHERWISE NOTED
	PUMP MOTOR		TRANSIENT VOLTAGE SURGE SUPPRESSION
	VENTILATING FAN MOTOR		POINT OF CONNECTION
	UNIT HEATER FAN MOTOR		SWITCHBOARD
	FAN COIL UNIT MOTOR		ELECTRICAL NOTE REFERENCE
	UNIT VENTILATOR MOTOR		DETAIL DESIGNATION SHEET NUMBER
	DAMPER MOTOR		SIPRNET DATA OUTLET CONSTRUCTED TO CURRENT STANDARDS
	MOTOR, AS INDICATED		FIRE ALARM CONTROL PANEL
	EXISTING TO BE REMOVED		FIRE ALARM SYSTEM DUCT MOUNTED SMOKE DETECTOR
	EXISTING TO REMAIN		FIRE ALARM SYSTEM SPRINKLER FLOW SWITCH
	NEW		FIRE ALARM SYSTEM SPRINKLER VALVE TAMPER SWITCH - SUPERVISORY SERVICE
	EXISTING DEVICE TO BE RELOCATED		FIRE ALARM REMOTE TEST STATION WITH INDICATING LIGHT
	NEW LOCATION OF RELOCATED DEVICES		INDICATES SIZE AND NUMBER OF CONDUCTORS INSTALLED IN EACH OF FIVE (5) 4"-CONDUITS
	TRANSFORMER		KILOWATT-HOUR DEMAND METER (SINGLE LINE DIAGRAM)
	DISTRIBUTION TRANSFORMER (SINGLE LINE DIAGRAM)		CURRENT TRANSFORMER (SINGLE LINE DIAGRAM)
	CIRCUIT BREAKER (SINGLE LINE DIAGRAM)	NOTE: DASHED SYMBOLS REPRESENT EXISTING EQUIPMENT TO BE REMOVED UNLESS SPECIFICALLY NOTED OTHERWISE. SOLID LIGHT SYMBOLS REPRESENT EXISTING EQUIPMENT TO REMAIN AS IS UNLESS SPECIFICALLY NOTED OTHERWISE. SOLID HEAVY SYMBOLS REPRESENT NEW EQUIPMENT	
	GROUND CONNECTION		

**GENERAL NOTE:**

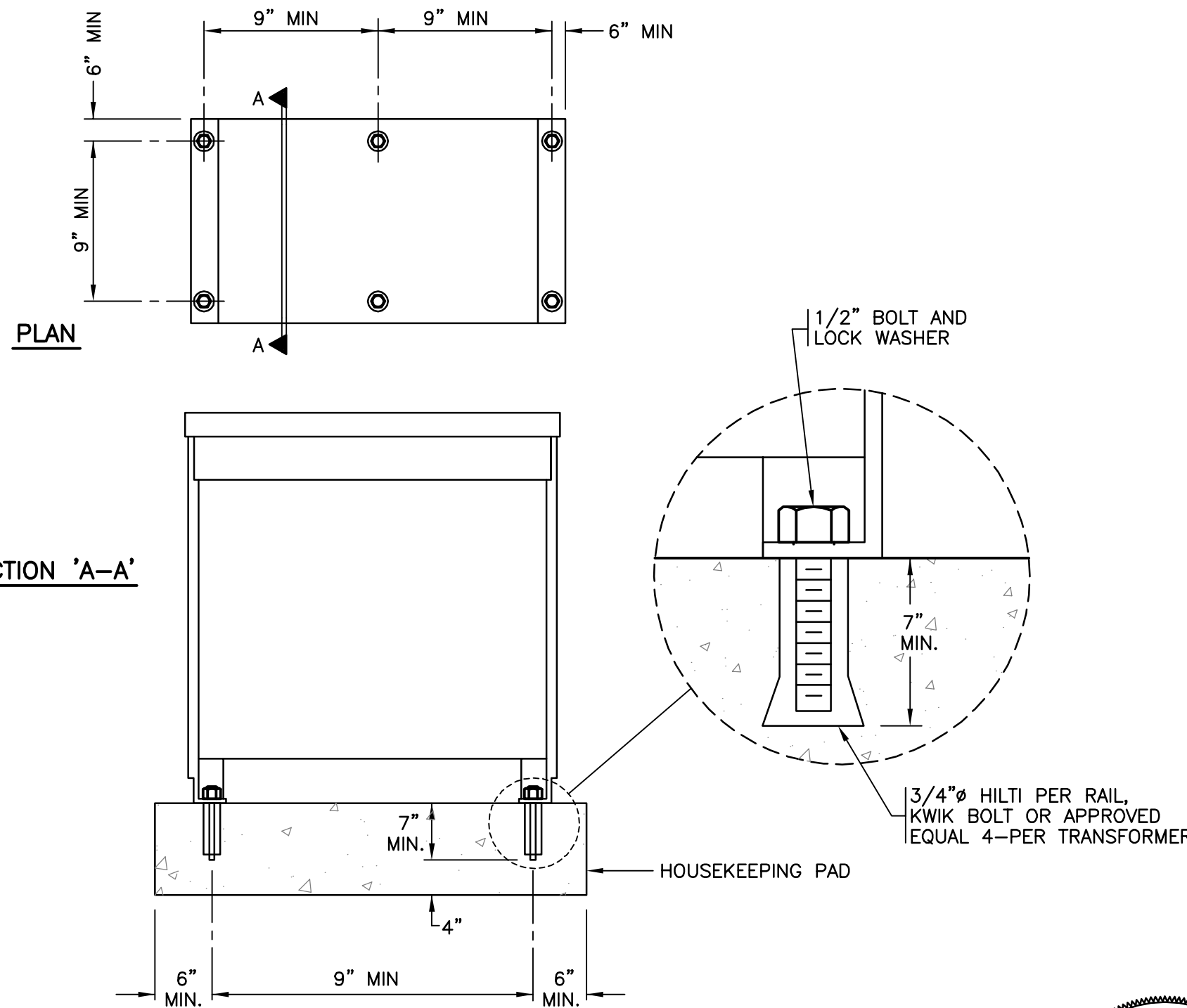
THE CONTRACTOR SHALL EXERCISE CARE IN THE FINISH WORK AROUND ANY BUILDING PENETRATION TO ENSURE THAT THE SURROUNDING AREA IS RETURNED TO ITS ORIGINAL APPEARANCE.



**A** PANELBOARD MOUNTING DETAIL  
NO SCALE



**B** TRANSFORMER GROUND CONNECTION  
NO SCALE



**C** DISTRIBUTION TRANSFORMER ANCHORAGE  
NO SCALE







**BARKSDALE  
AIR FORCE BASE  
LOUISIANA**

**APPROVED**

SIGNATURE	OFFICE
	Civil Engineer
	Chief of Engineering
	Chief of Design
	Contracting
	User

**COORDINATION**

	Airfield Manager
	Ground Safety
	Communication Computers
	Bioregional Engineer
	Security Police
	Security Systems
	Fire Chief
	Chief of Operations
	Environmental Management
	Construction Management
	Roofing Engineer
	Pavements Engineer
	Corrosion Engineer
	Protective Coating Engr.

**CONTRACTING ORGANIZATION**



**S. E. Huey Co.**  
Engineering • Architecture • Surveying  
1111 N. 19th ST. MONROE, LA. 71201 PH. 318-325-1791

**DESIGN FIRM**

**JOHN J. GUTH  
ASSOCIATES,  
INC.**  
**MECHANICAL AND  
ELECTRICAL  
ENGINEERS**  
208 MILAM STREET  
SHREVEPORT, LA  
71101

**GUTH PROJECT NO. 6637**

DESIGNER	PROJECT MANAGER
JPF	MSM
DRAWN	DATE
SGI	18 APR 17

REVISION	BY/DATE

**SHEET TITLE**

**ELECTRICAL  
FLOOR PLAN**

SHEET  
**E2**

OF  
**3E**

**PROJECT TITLE**

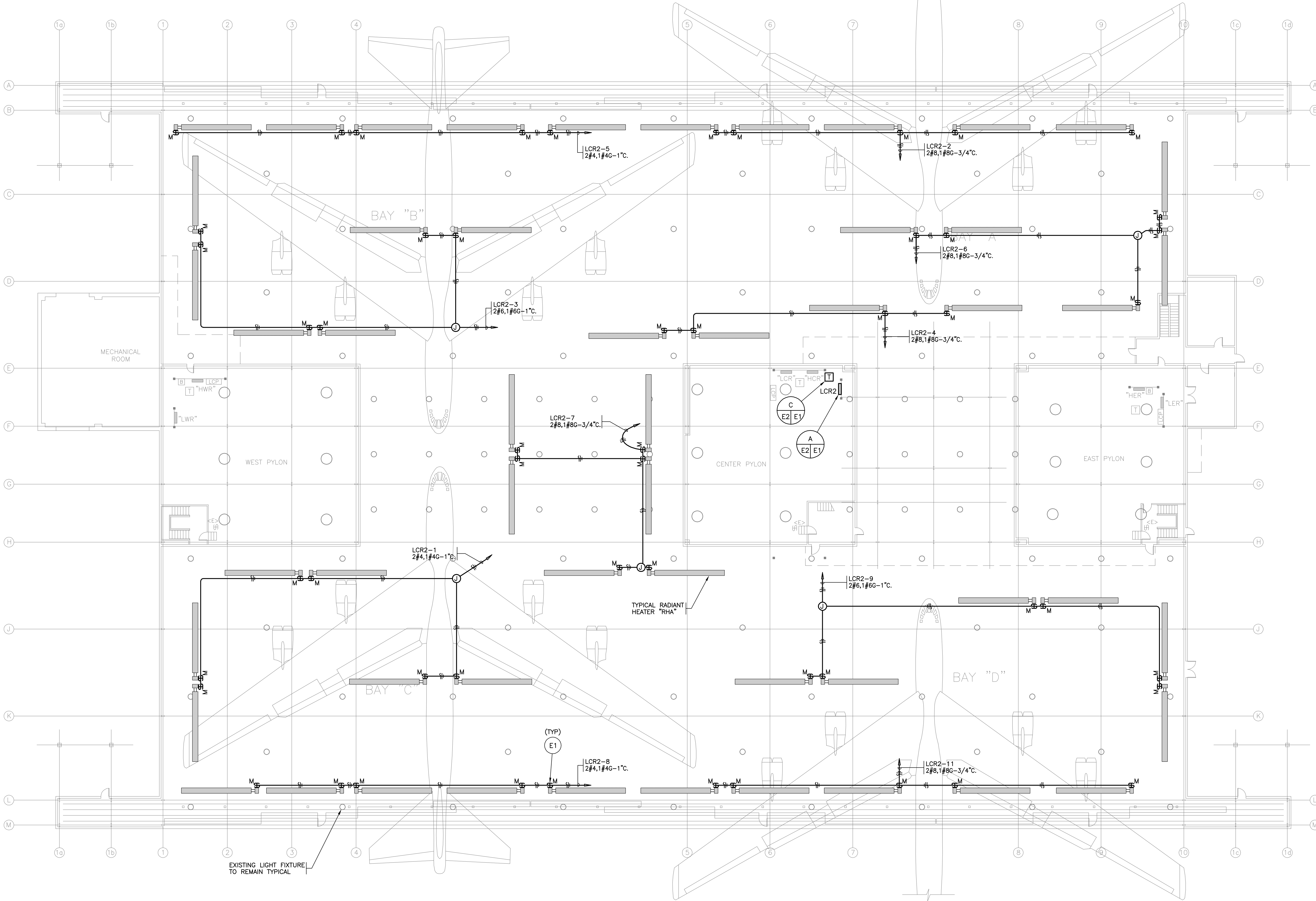
**Repair Gas Heat  
B6604 (307th BW)**

BARKSDALE AIR FORCE BASE, LA.

PROJECT NO.  
BAFB-AWUB 10-0192

DRAWING NO.

FACILITY NO.



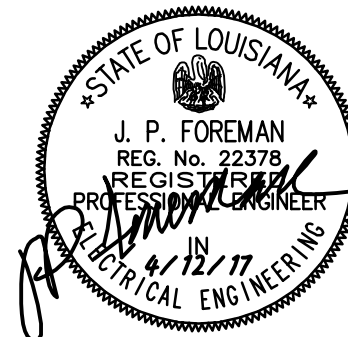
**ELECTRICAL NOTES:**

- E1 PROVIDE PIG-TAIL SPLICE AT EQUIPMENT AS REQUIRED FOR TERMINATION OF CONDUCTORS ONTO DEVICES.

**ELECTRICAL FLOOR PLAN** 1/16"=1'-0"



2' 0" 10' 20' 30' 40' 50'  
SCALE: 1/16 INCH = 1 FOOT







BARKSDALE  
AIR FORCE BASE  
LOUISIANA

APPROVED

SIGNATURE	OFFICE
	Civil Engineer
	Chief of Engineering
	Chief of Design
	Contracting
	User

COORDINATION

	Airfield Manager
	Ground Safety
	Communication Computers
	Biorenmmental Engineer
	Security Police
	Security Systems
	Fire Chief
	Chief of Operations
	Environmental Management
	Construction Management
	Roofing Engineer
	Pavements Engineer
	Corrosion Engineer
	Protective Coating Engr.

CONTRACTING ORGANIZATION



**S. E. Huey Co.**  
Engineering • Architecture • Surveying  
1111 N. 19th ST. MONROE, LA. 71201 PH. 318-325-1791

DESIGN FIRM

JOHN J. GUTH  
ASSOCIATES, INC.  
MECHANICAL AND ELECTRICAL ENGINEERS  
208 MILAM STREET  
SHREVEPORT, LA 71101

GUTH PROJECT NO. 6637

DESIGNER JPF	PROJECT MANAGER MSM
DRAWER AJL	DATE 18 APR 17

REVISION BY/DATE


SHEET TITLE

PANELBOARD  
SCHEDULES

SHEET  
E3

OF  
3E

PROJECT TITLE

Repair Gas Heat  
B6604 (307th BW)

BARKSDALE AIR FORCE BASE, LA.

PROJECT NO.  
BAFB-AWUB 10-0192

DRAWING NO.

FACILITY NO.

PANELBOARD SCHEDULE

PANEL	HCR	VOLTS	480/277	PHASE	3	WIRES	4	AMPS	400	MAIN	MLO	BUS AMPS	400	MTG.	RACK	
CIRC. NO.	TRIP AMPS	NO. POLES	LOAD SERVED	PHASE LOAD V.A.			A	B	C	LOAD SERVED	CIRC. NO.	TRIP AMPS	NO. POLES			
1	60	—	EXISTING				7170 15000			EXISTING	2	60	—			
3	—	—	—					7170 15000		—	4	—	—			
5	—	3	—						7170 15000	—	6	—	3			
7	100	—	EXISTING				22000 3432			TRANSFORMER	8	40	—			
9	—	—	—					22000 2496		—	10	—	—			
11	—	3	—						22000 2516	—	12	—	3			
13	100	—	EXISTING				22000 X				14					
15	—	—	—					22000 X			16					
17	—	3	—						22000 X		18					
19	100	—	EXISTING				22000 X				20					
21	—	—	—					22000 X			22					
23	—	3	—						22000 X		24					
25							X				26					
27							X				28					
29								X			30					
31							X				32					
33								X			34					
35								X			36					
37							X				38					
39								X			40					
41									X		42					
43							X				44					
45								X			46					
47									X		48					
49							X				50					
51								X			52					
53									X		54					
SECTION TOTAL							X	X	X							
INTERRUPTING RATING							22,000	AIC SYMM.	TOTAL	76602	75667	75686	TOTAL CONNECTED LOAD			274.6A

PANELBOARD SCHEDULE

PANEL		LCR2	VOLTS	208/120	PHASE	3	WIRES	4	AMPS	100	MAIN	80/3P	BUS AMPS	100	MTG.	RACK
CIRC. NO.	TRIP AMPS	NO. POLES	LOAD SERVED	PHASE LOAD V.A.						LOAD SERVED	CIRC. NO.	TRIP AMPS	NO. POLES			
1	20	1	HEATER					936 780					HEATER	2	20	1
3	20	1	HEATER						936 624				HEATER	4	20	1
5	20	1	HEATER							780 936			HEATER	6	20	1
7	20	1	HEATER					936 780					HEATER	8	20	1
9	20	1	HEATER						936 X				SPARE	10	20	1
11	20	1	HEATER							780 X			SPARE	12	20	1
13	20	1	.					X X					SPARE	14	20	1
15	20	1	.						X X				SPARE	16	20	1
17	20	1	.							X X			SPARE	18	20	1
19	X	X	SPACE					X X					SPACE	20	X	X
21	X	X	SPACE						X X				SPACE	22	X	X
23	X	X	SPACE							X X			SPACE	24	X	X
TOTAL CONNECTED LOAD				23.44	KVA	TOTAL	3432	2496	2516	DEMAND LINE AMPS				81.4		
ESTIMATED DEMAND LOAD				5.86	KVA					INTERRUPTING RATING				10,000	AIC SYMM.	





**APPROVED**

	COORDINATION
--	--------------

**CONTRACTING ORGANIZATION**

## DESIGN FIRM



<b>DESIGNER</b> DRA	<b>PROJECT MANAGER</b> DRA
<b>DRAFTER</b> DCJ	<b>DATE</b> 18 APR 17

[illegible]

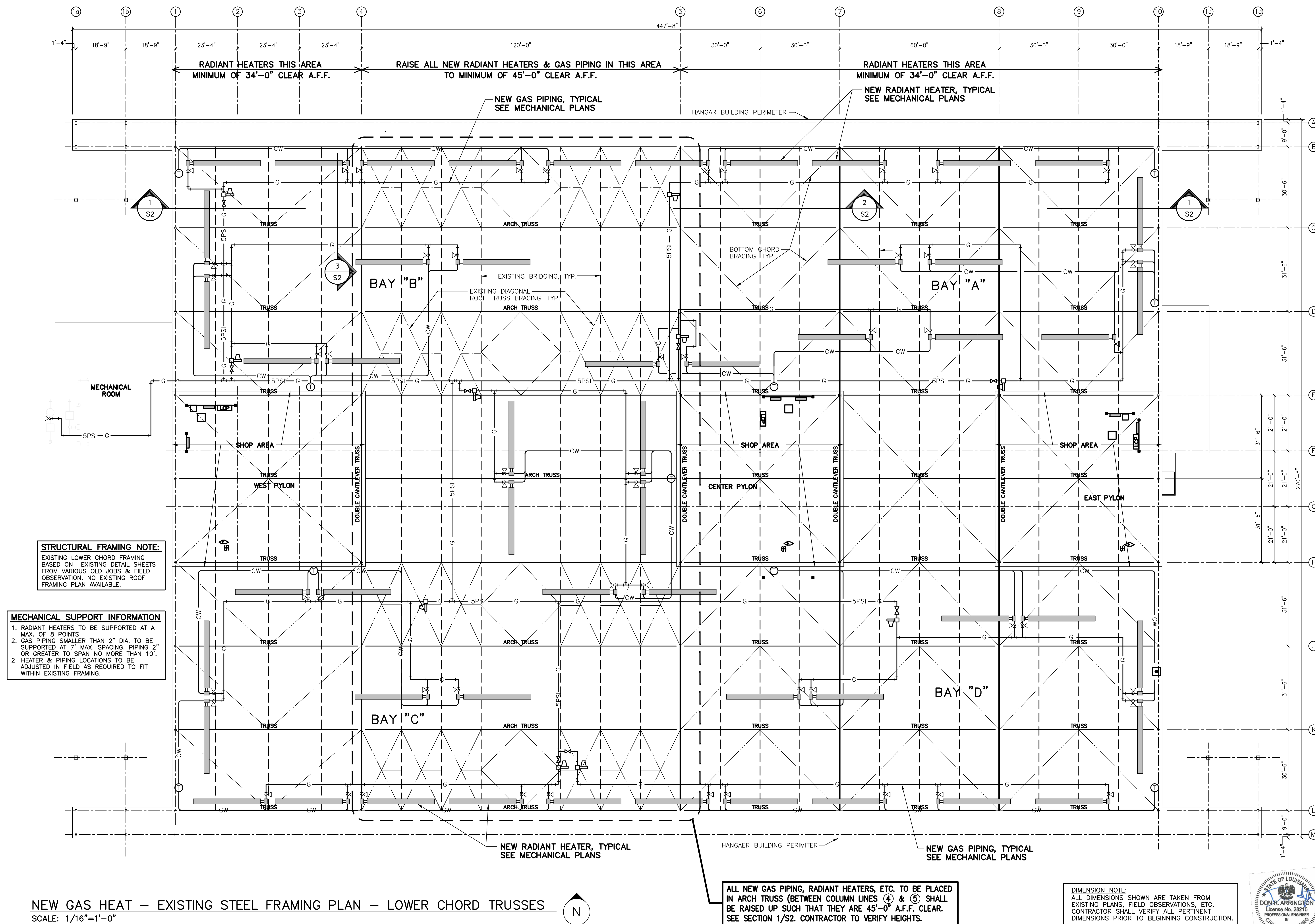
ROOF FRAMING PLAN

PROJECT TITLE	
---------------	--

BARKSDALE AIR FORCE BASE, LA.

PROJECT NO.

BAFB-AWUB 15-0092	
DRAWING NO.	FACILITY NO.







**BARKSDALE  
AIR FORCE BASE  
LOUISIANA**

**APPROVED**

SIGNATURE	OFFICE
	Civil Engineer
	Chief of Engineering
	Chief of Design
	Contracting
	User

**COORDINATION**

	Airfield Manager
	Ground Safety
	Communication Computers
	Biomedical Engineer
	Security Police
	Security Systems
	Fire Chief
	Chief of Operations
	Environmental Management
	Construction Management
	Roofing Engineer
	Pavements Engineer
	Corrosion Engineer
	Protective Coating Engr.

**CONTRACTING ORGANIZATION**

**DESIGN FIRM**



**S. E. Huey Co.**

Engineering • Architecture • Surveying

1111 N. 19th ST. MONROE, LA. 71201 PH. 318-325-1791

DESIGNER	PROJECT MANAGER
DRA	DRA
DATE	DATE
DCJ	18 APR 17

REVISION	BY/DATE

**SHEET TITLE  
HANGAR ONE  
(B6604)**

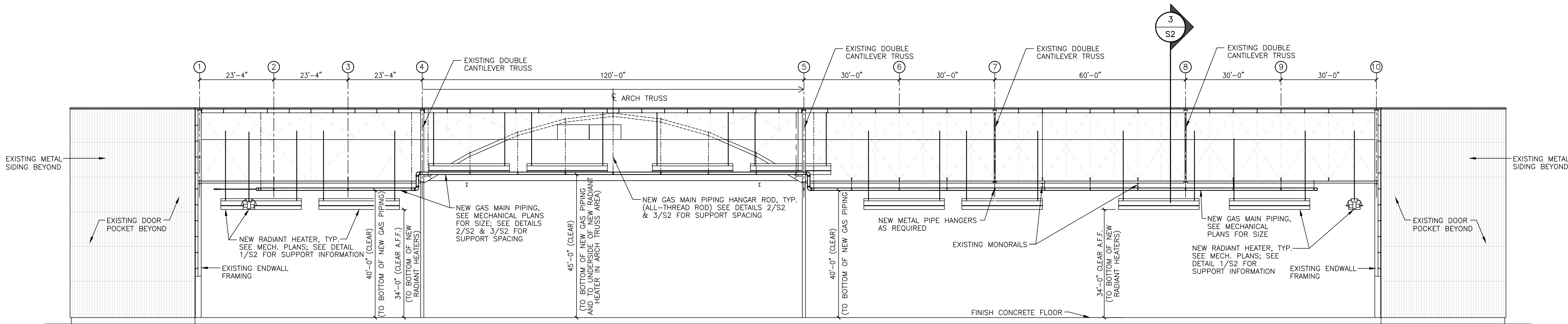
STRUCTURAL SECTIONS AND  
ARCH. PENETRATION DETAILS

SHEET	OF
S2	2S

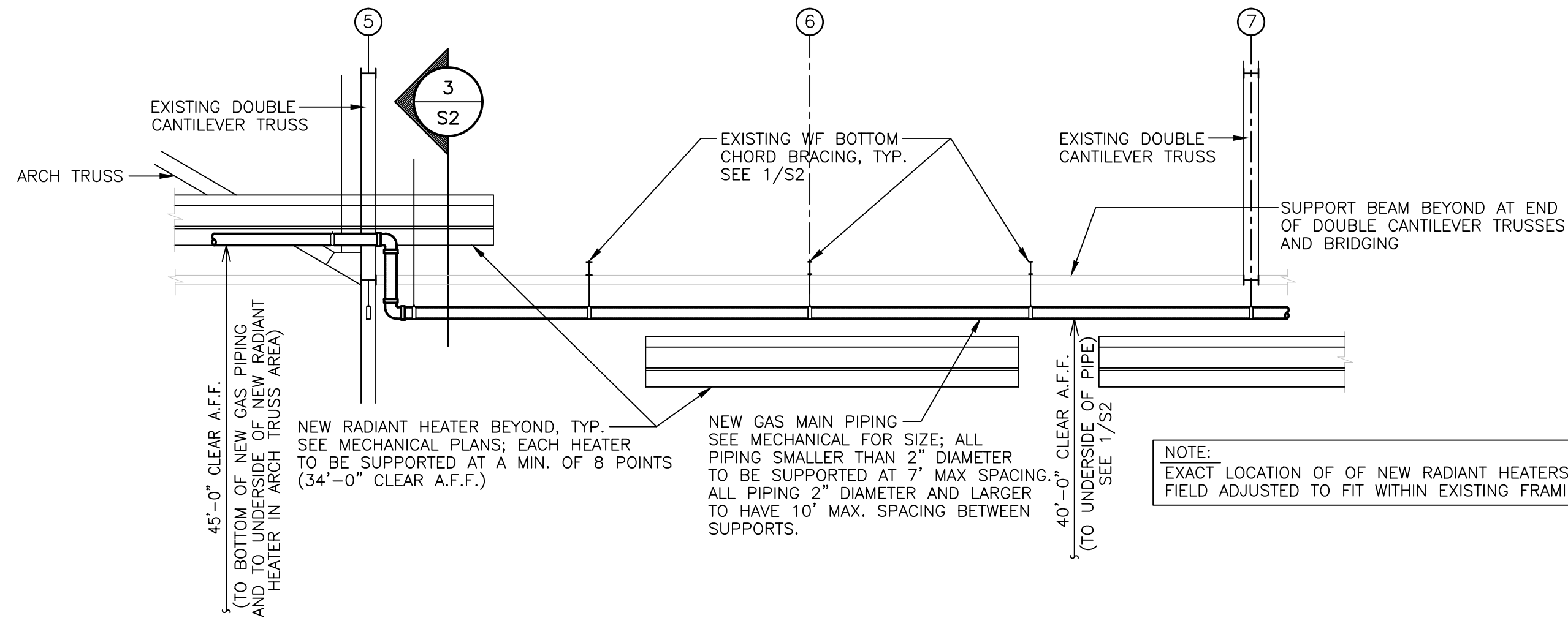
**PROJECT TITLE  
REPAIR GAS HEAT  
B6604 (307th BW)**

BARKSDALE AIR FORCE BASE, LA.

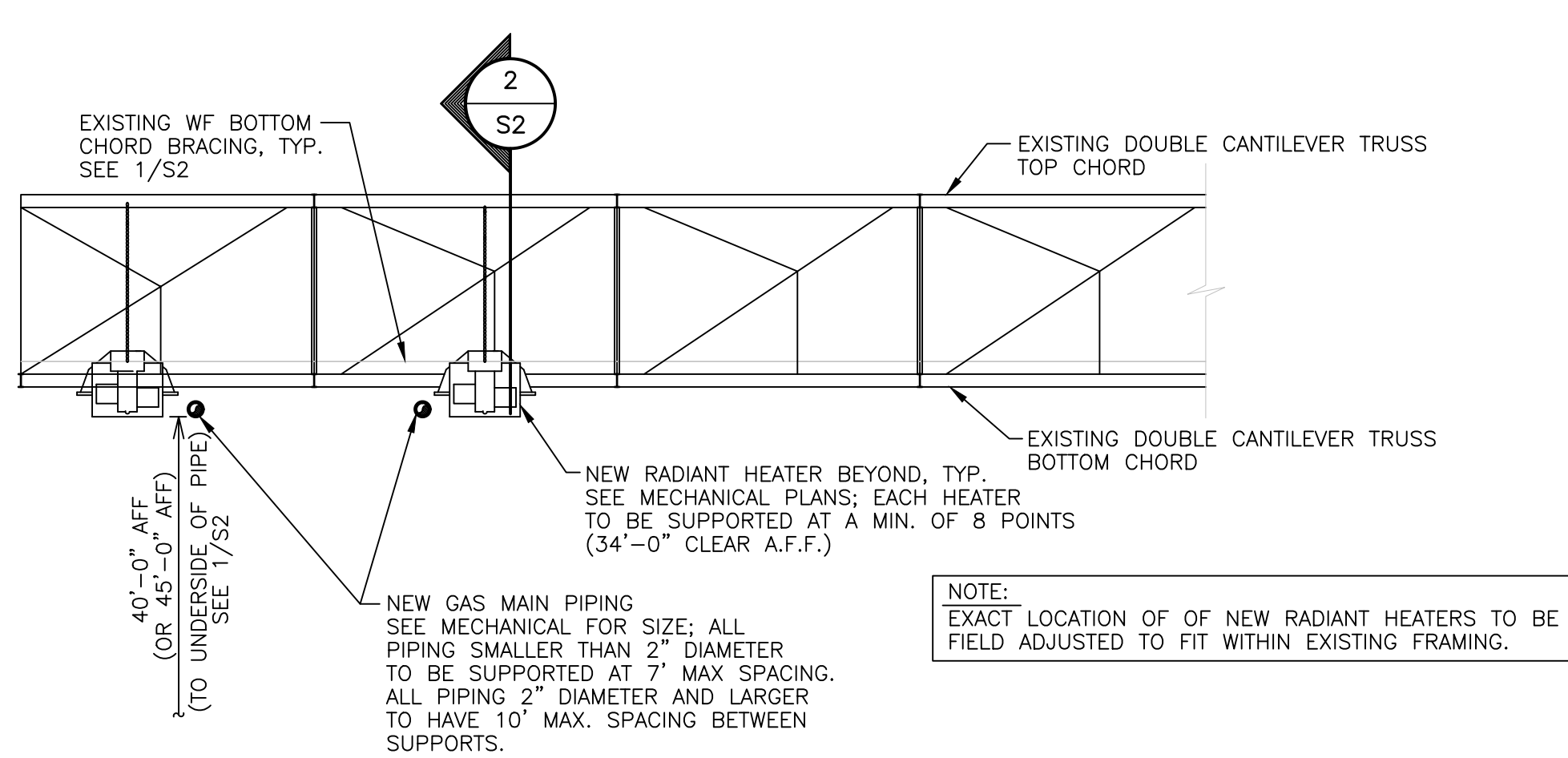
PROJECT NO.	BAFB-AWUB 10-0192
DRAWING NO.	FACILITY NO.



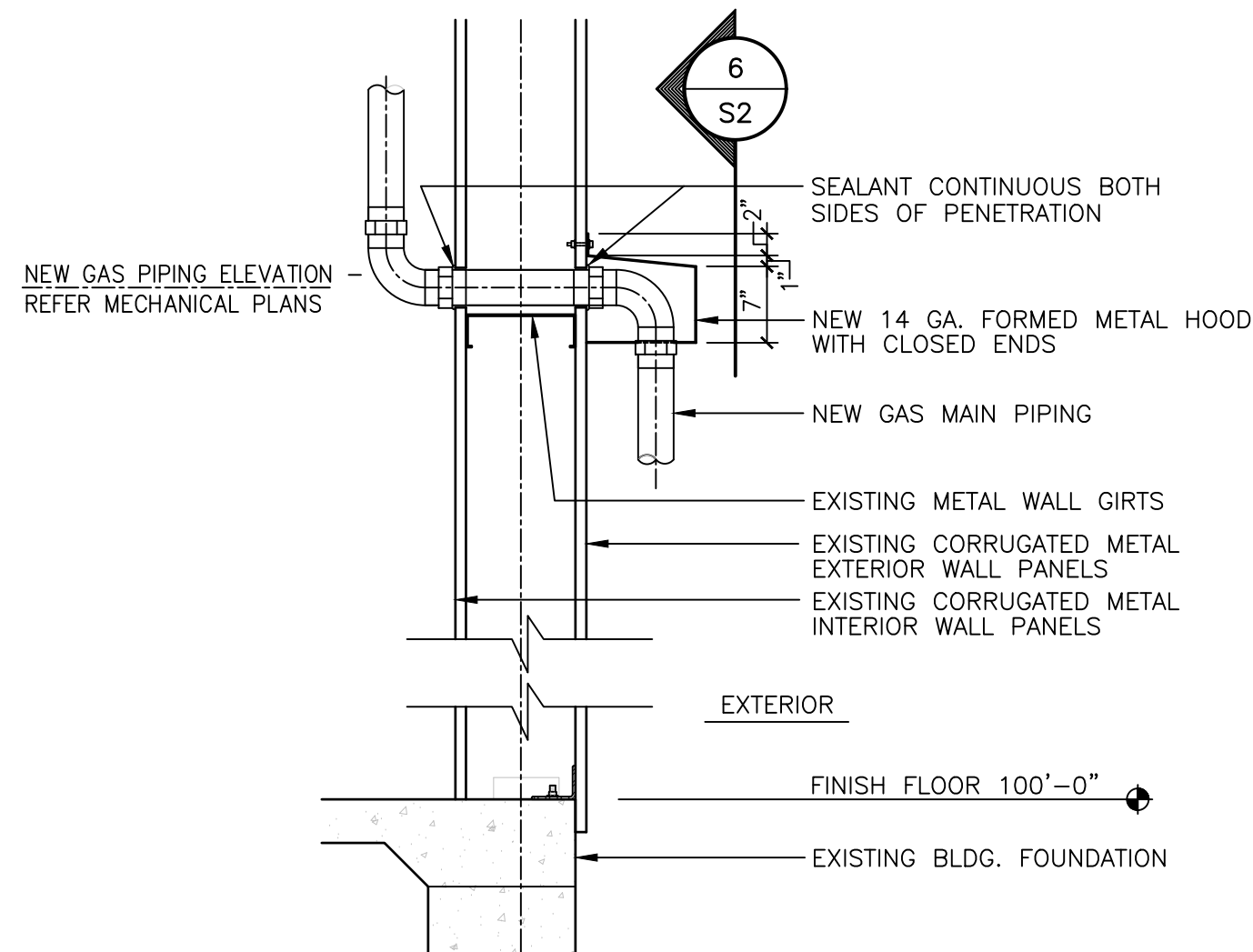
**1 SECTION LOOKING NORTH - EXISTING STRUCTURAL FRAMING & NEW GAS PIPING**  
SCALE: 1/16"=1'-0"



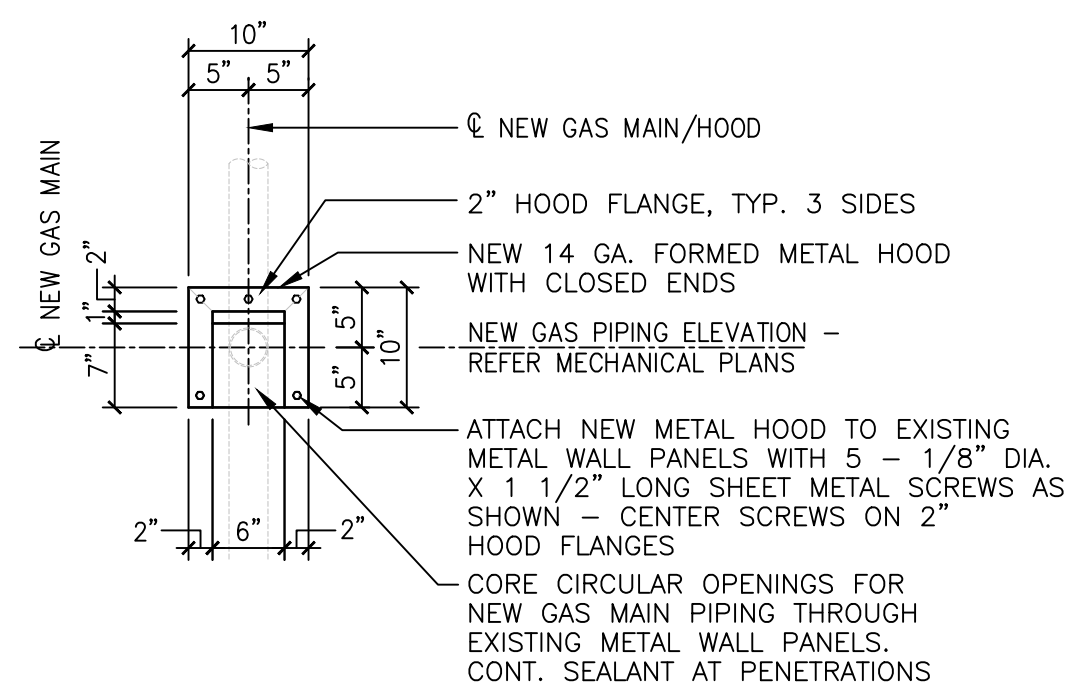
**2 TRUSS SECTION PERPENDICULAR TO DOUBLE CANTILEVER TRUSSES**  
NO SCALE



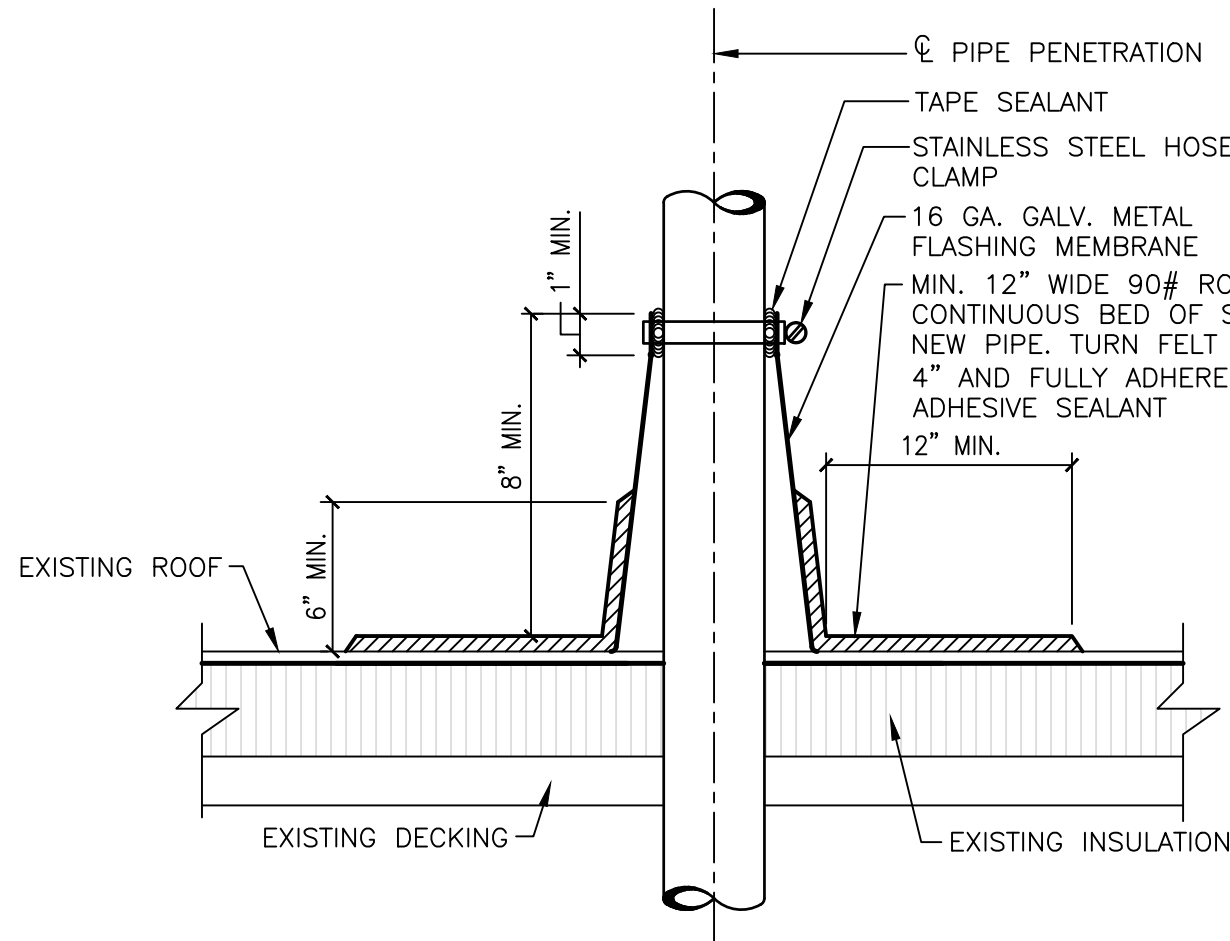
**3 TRUSS SECTION PARALLEL TO DOUBLE CANTILEVER TRUSSES**  
NO SCALE



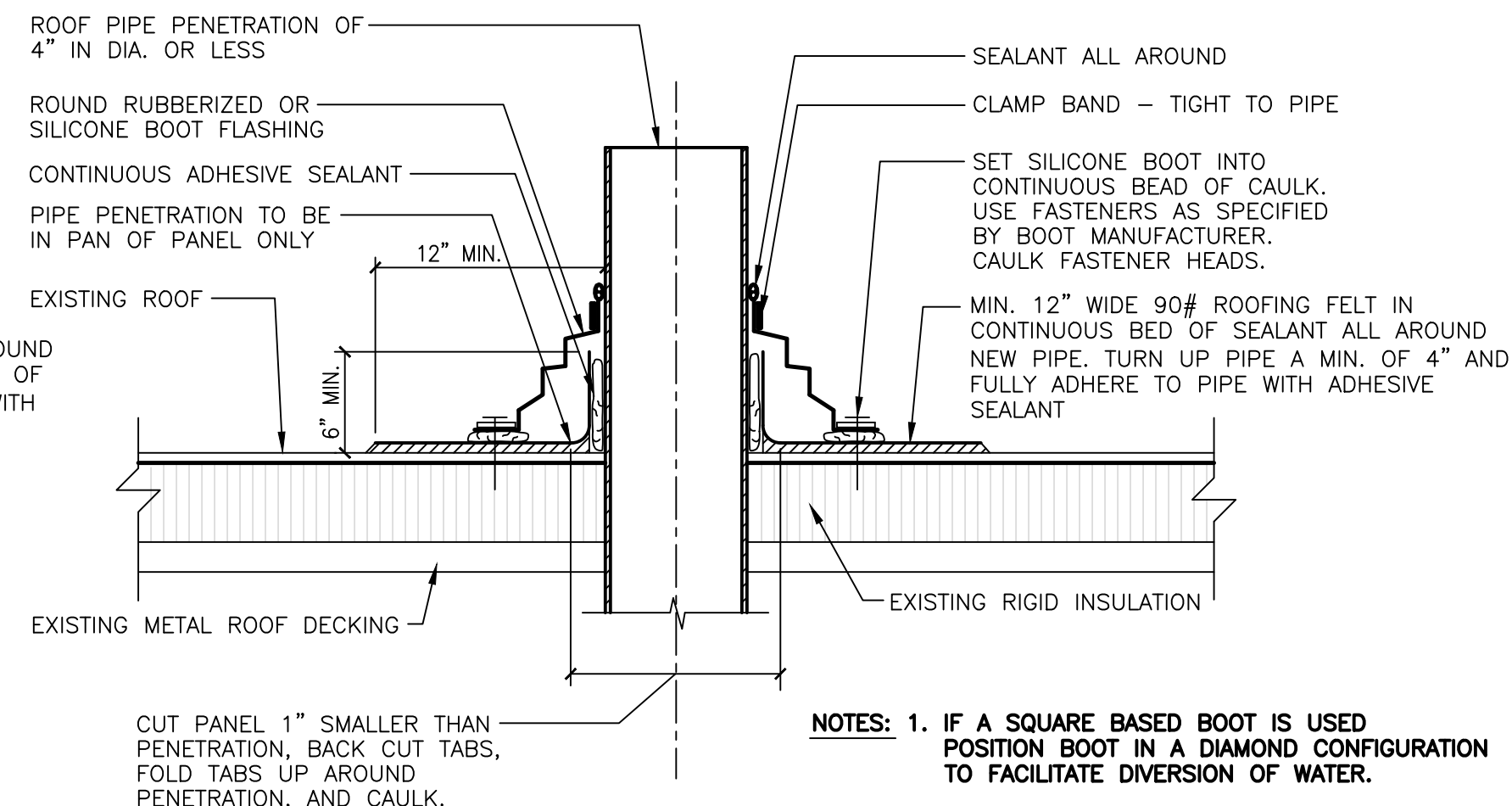
**7 DETAIL - THRU-WALL GAS MAIN PIPING**  
SCALE: 3/4"=1'-0"



**6 DETAIL - GAS PIPING HOOD**  
SCALE: 3/4"=1'-0"



**5 ROOF PENETRATION WITH CONE FLASHING**  
NO SCALE



**4 ROOF PENETRATION WITH SILICONE BOOT**  
NO SCALE